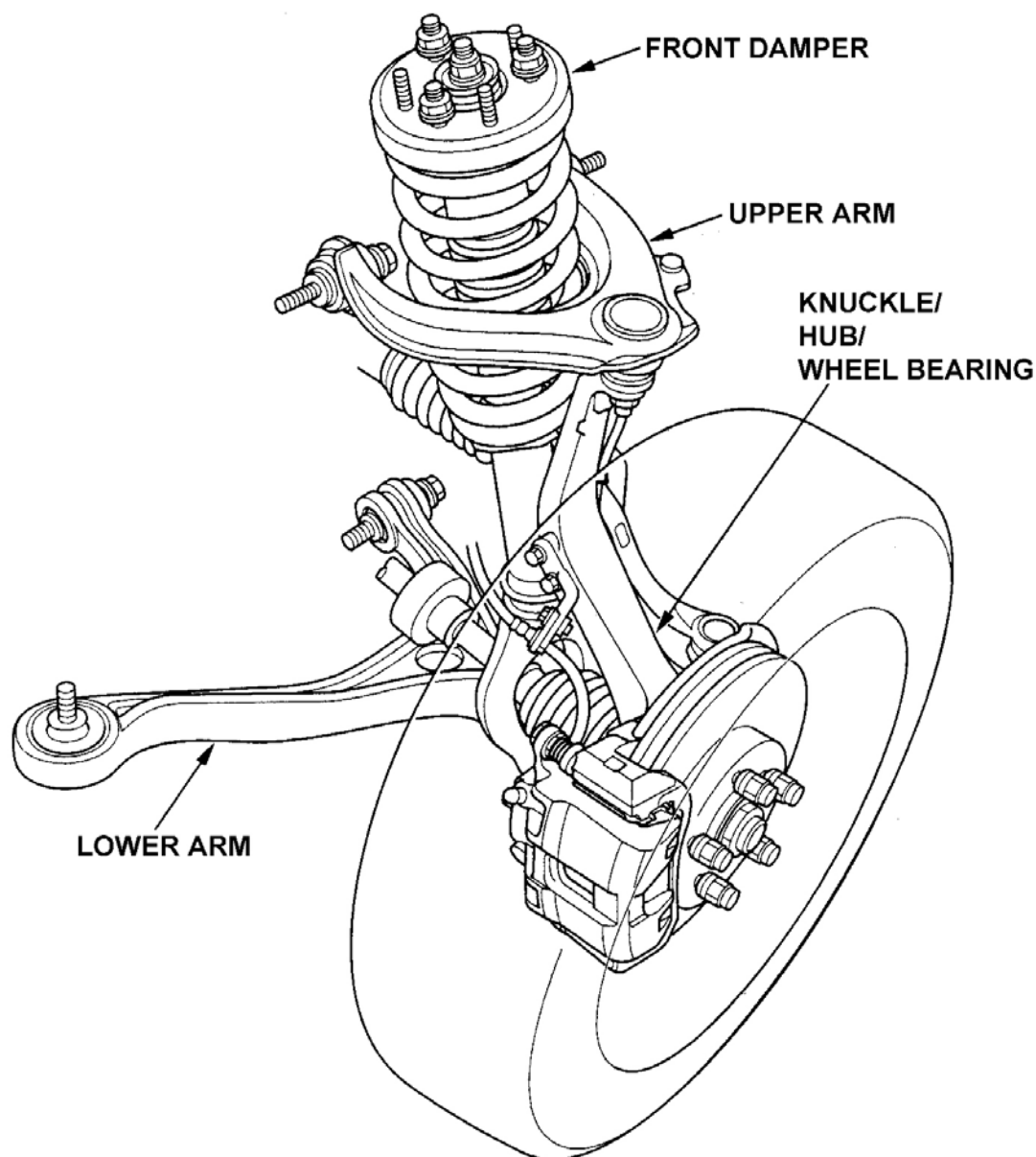


2004 SUSPENSION

Front - TSX

DESCRIPTION

NOTE: For system description and component location, see Fig. 1 .



G00306186

Fig. 1: Identifying Front Suspension Components

Courtesy of AMERICAN HONDA MOTOR CO., INC.

ADJUSTMENTS

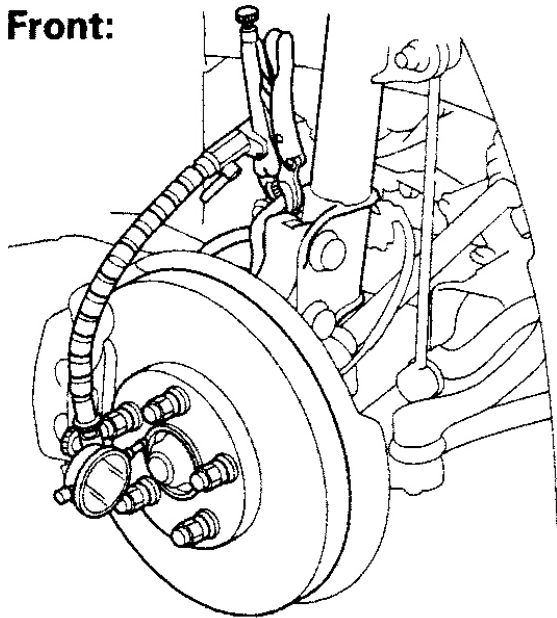
WHEEL ALIGNMENT

See SPECIFICATIONS & PROCEDURES article in WHEEL ALIGNMENT.

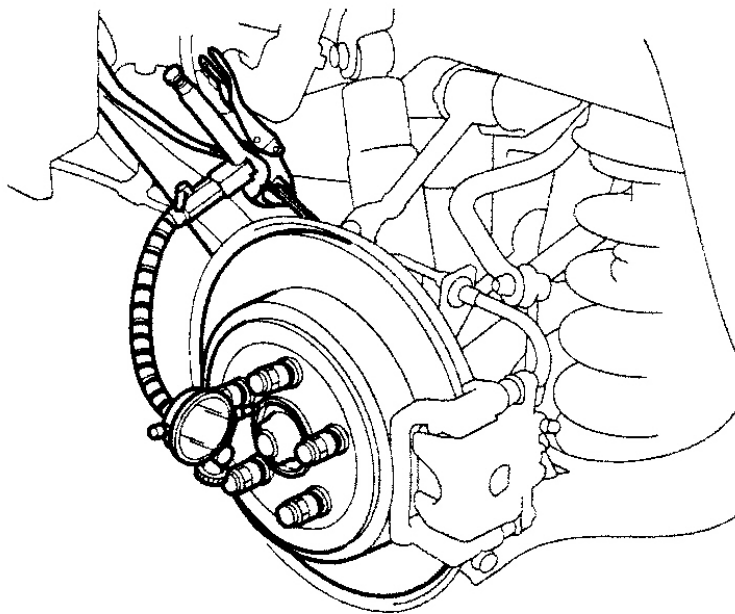
WHEEL BEARING END PLAY

1. Raise vehicle, and ensure it is securely supported.
2. Remove wheels, and reinstall wheel nuts to the specification. See TORQUE SPECIFICATIONS .
3. Attach dial gauge against hub flange.
4. Measure bearing end play moving the brake disc inward or outward. See Fig. 2 .
5. If the bearing end play measurement is more than .002" (.05 mm), replace the wheel bearing.

Front:



Rear:



G00306175

Fig. 2: Identifying Wheel Bearing End Play
Courtesy of AMERICAN HONDA MOTOR CO., INC.

REMOVAL & INSTALLATION

BALL JOINT

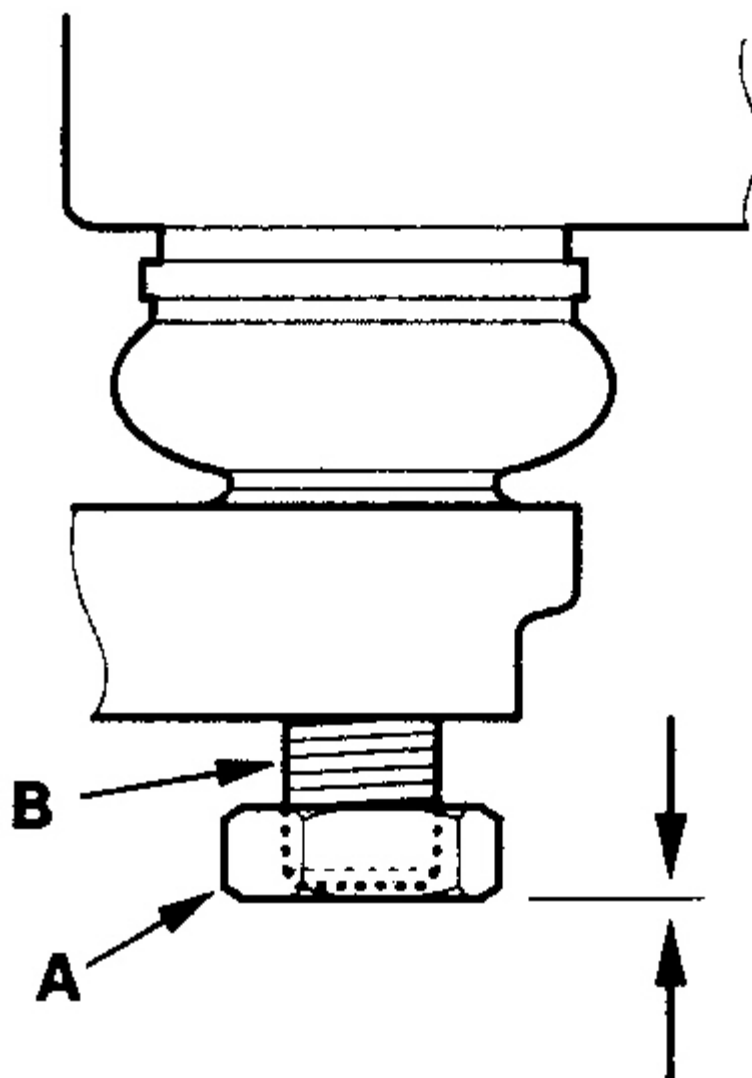
NOTE: Always use a ball joint remover to disconnect a ball joint. Do not strike the housing or any other part of the ball joint connection to disconnect it.

Removal

1. Install a hex nut (A) onto the threads of the ball joint (B). See **Fig. 3** . Make sure the nut is flush with the ball joint pin end to prevent damage to the threaded end of the ball joint pin.
2. Apply grease to the special tool on the areas shown (A). See **Fig. 4** .
3. Loosen the pressure bolt (A), and install the ball joint boot clip guide. See **Fig. 5** . Insert the jaws carefully, making sure not to damage the ball joint boot. Adjust the jaw spacing by turning the adjusting bolt (B).
4. After adjusting the adjusting bolt, make sure the head (C) of the adjusting bolt is in the position shown to allow the jaw to pivot.
5. With a wrench, tighten the pressure bolt until the ball joint pin pops loose from the steering arm or knuckle. If necessary, apply penetrating type lubricant to loosen the ball joint pin.

NOTE: Do not use pneumatic or electric tools on the pressure bolt.

6. Remove the tool, then remove the nut from the end of the ball joint pin, and pull the ball joint out of the steering arm or knuckle. Inspect the ball joint boot, and replace it if damaged.



G00312787

Fig. 3: Installing Hex Nut

Courtesy of AMERICAN HONDA MOTOR CO., INC.