

2004 AUTOMATIC TRANSMISSIONS

Removal & Installation - TSX

TRANSMISSION REMOVAL

Special Tools Required:

- Engine hanger adapter VSB02C000015
 - Engine support hanger, A and Reds AAR-T-12566 (Available through the Honda Tool and Equipment Program)
 - Front subframe adapter EQS02C000011
1. Before disconnecting the battery, make sure you have the anti-theft code for the radio (and navigation system), then write down the frequencies for the radio's preset stations.
 2. Raise the vehicle, and make sure it is supported securely.
 3. Remove the splash shield.
 4. Remove the drain plug (A), and drain the automatic transmission fluid (ATF).

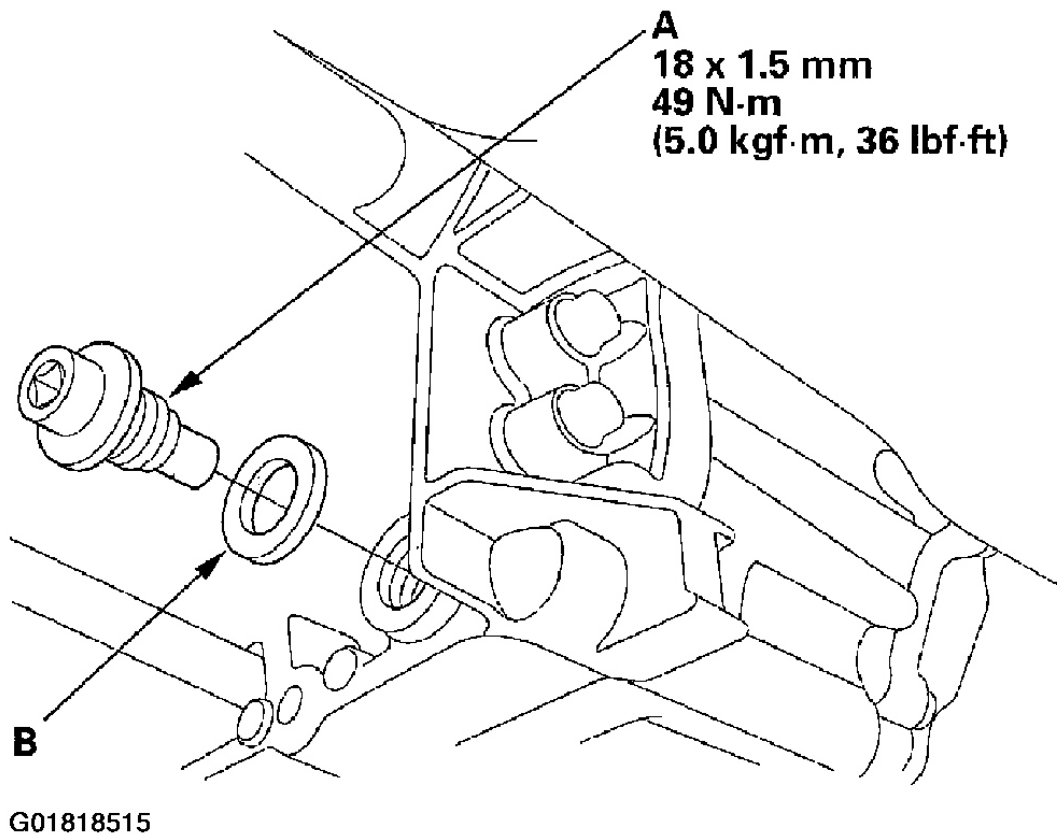
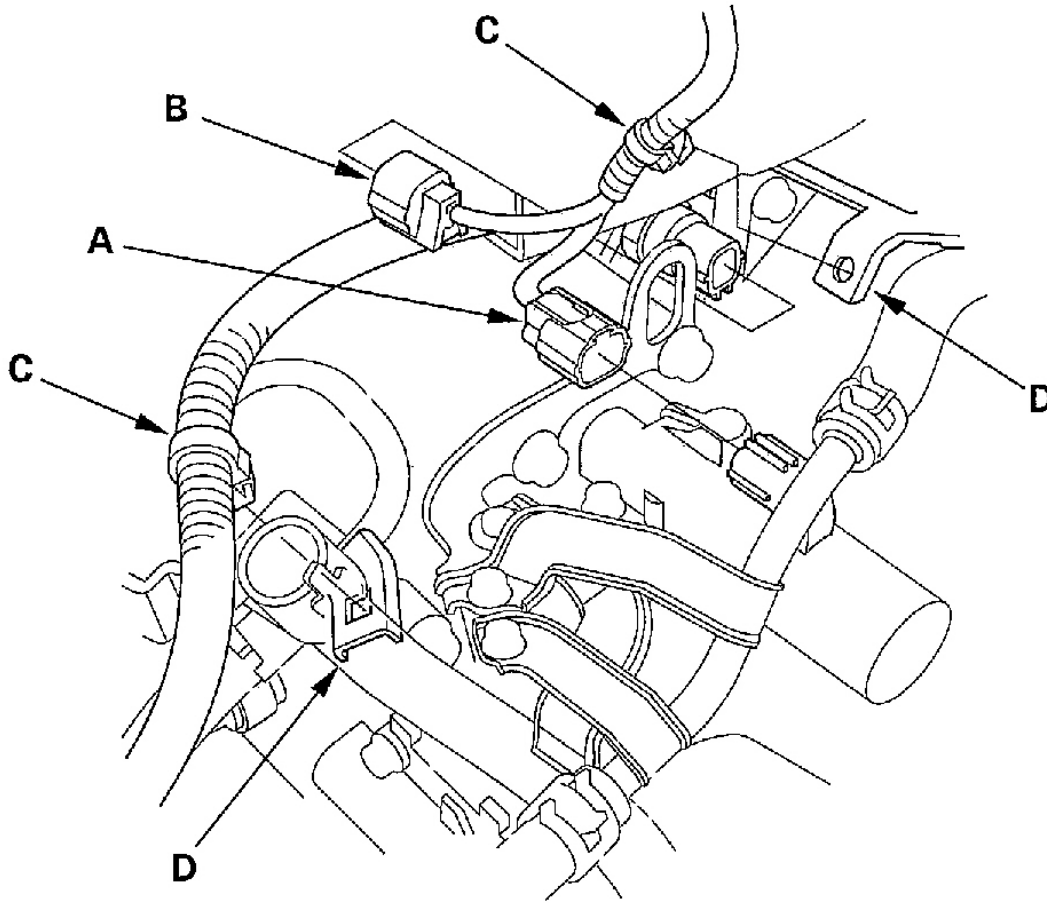


Fig. 1: Removing The Drain Plug

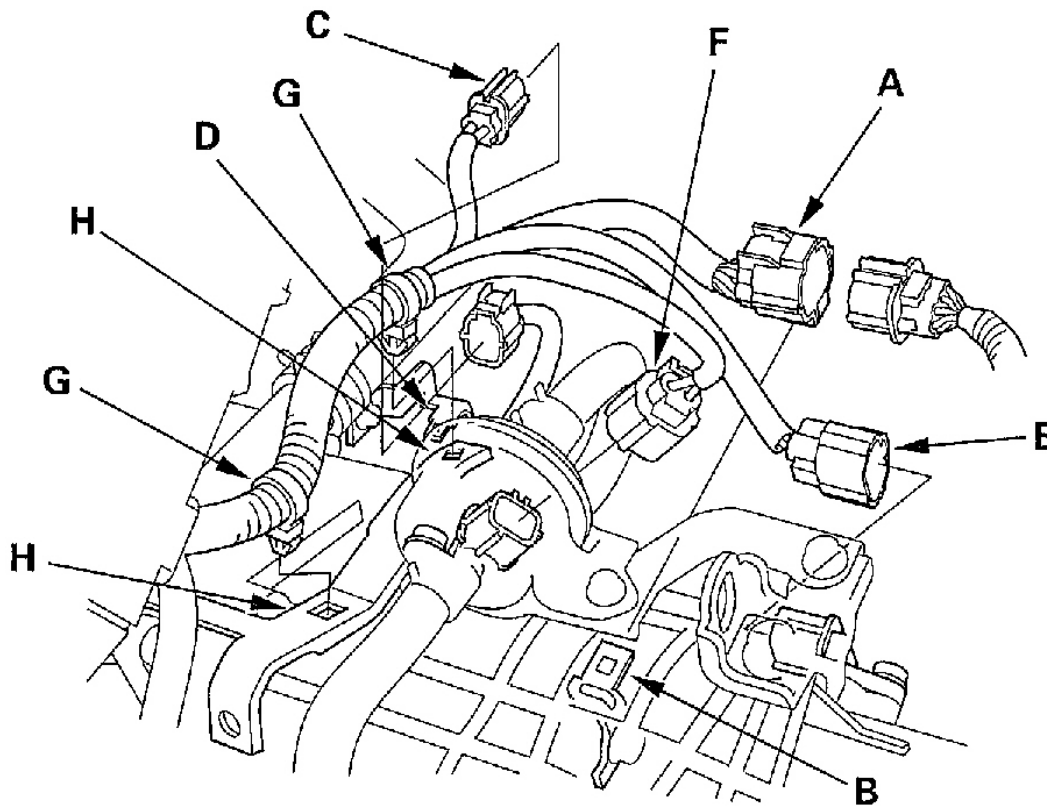
5. Reinstall the drain plug with a new sealing washer (B).
6. Disconnect the battery negative terminal, then disconnect the battery positive terminal.
7. Remove the battery hold-down bracket, then remove the battery cover, battery, and battery tray.
8. Remove the intake air duct and air cleaner housing.
9. Loosen the two bolts securing the battery base from under the vehicle, and remove the two bolts securing the battery base in the engine compartment, then remove the battery base.
10. Disconnect the A/T clutch pressure control solenoid valve A connector, and 2nd clutch transmission fluid pressure switch connector (B), and remove the harness clamps (C) from the clamp brackets (D).



G01818516

Fig. 2: Disconnecting Connectors

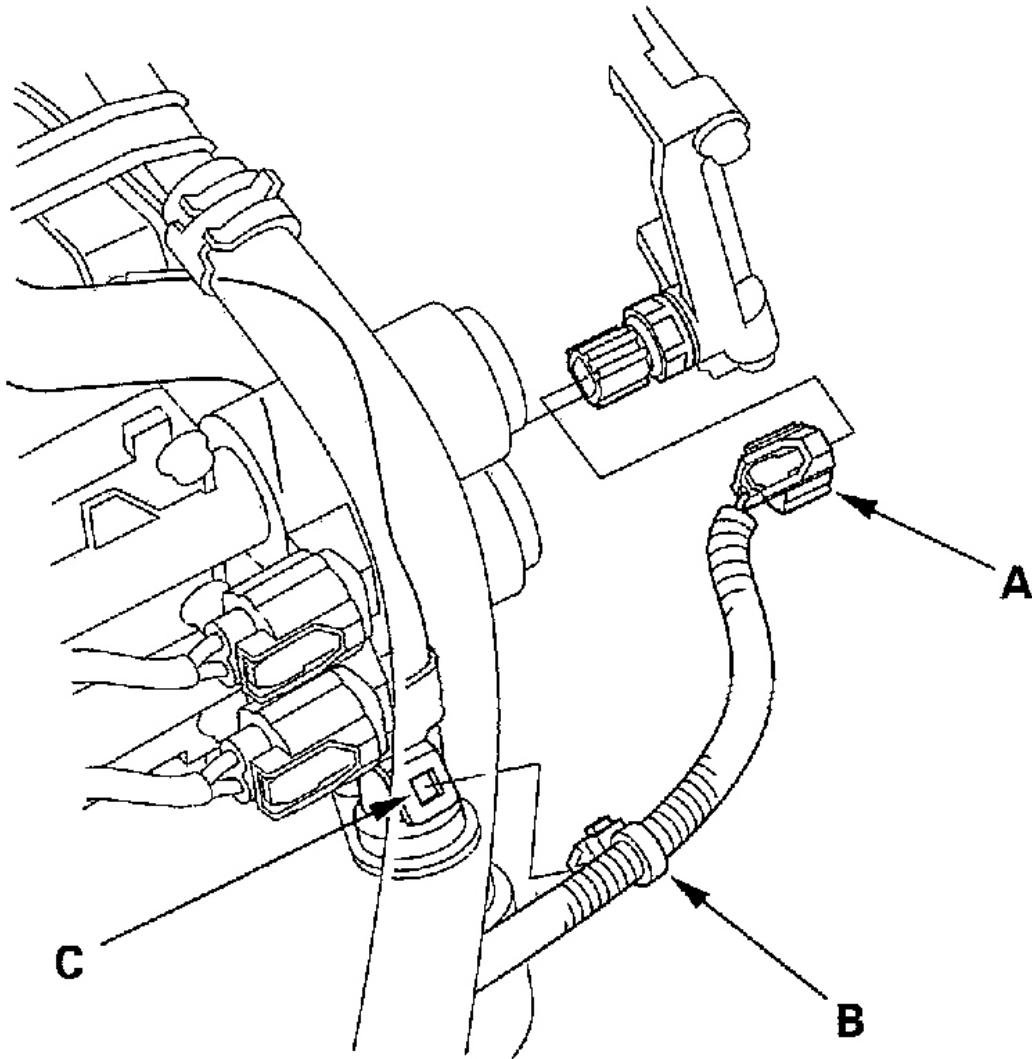
11. Remove the transmission range switch connector (A) from its bracket (B), then disconnect it.



G01818517

Fig. 3: Removing The Transmission Range Switch Connector

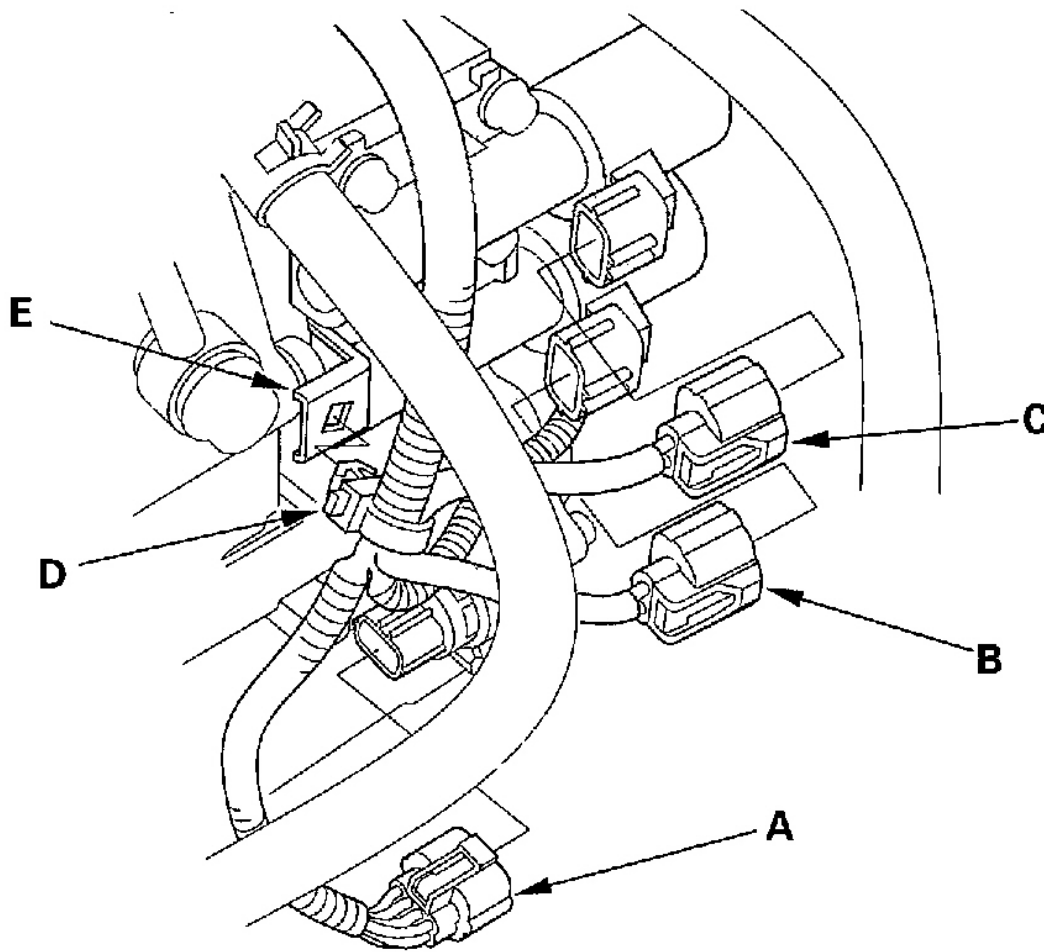
12. Remove the AF sensor connector (C) from its bracket (D), then disconnect it.
13. Disconnect the mainshaft speed sensor connector (E) and countershaft speed sensor connector (F), and remove the harness clamps (G) from the clamp brackets (H).
14. Disconnect the 3rd clutch transmission fluid pressure switch connector (A), and remove the harness clamp (B) from the clamp bracket (C).



G01818518

Fig. 4: Disconnecting The 3rd Clutch Transmission Fluid Pressure Switch Connector

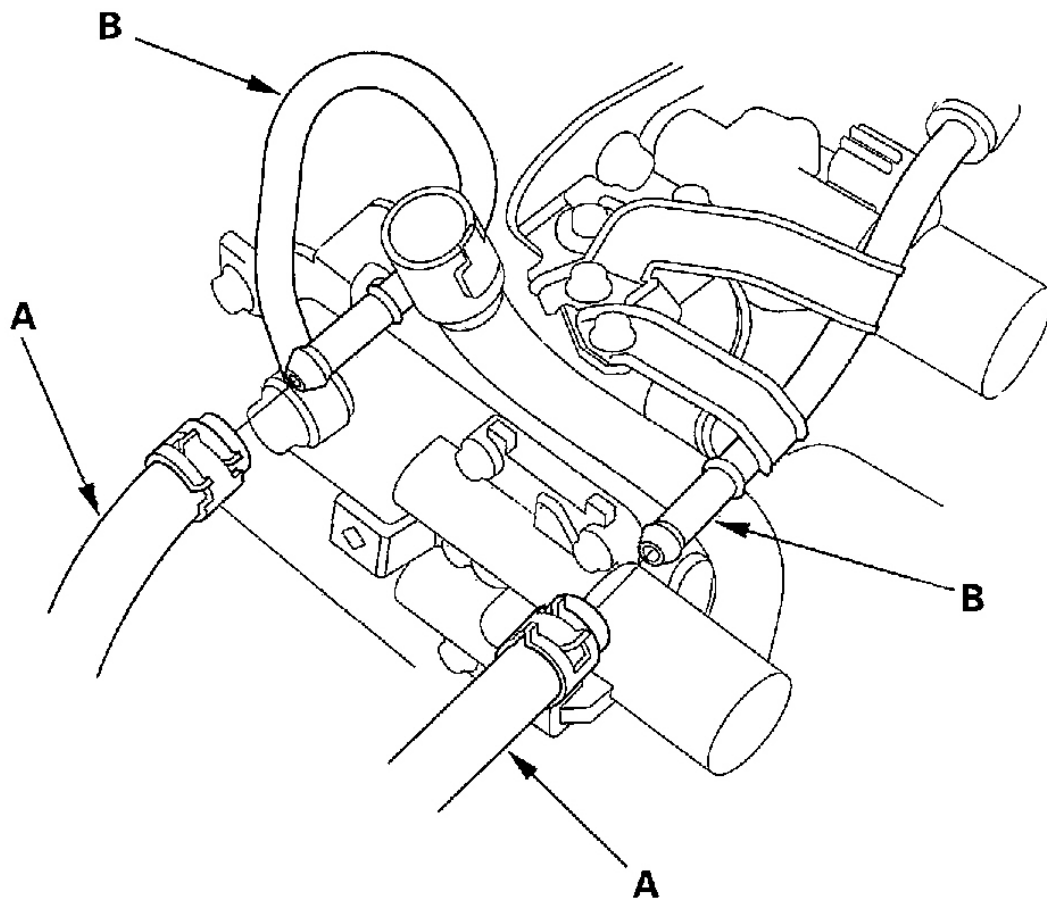
15. Disconnect the shift solenoid harness connector (A), A/T clutch pressure control solenoid valve B connector, and solenoid valve C connector, and remove the harness clamp (D) from the clamp bracket (E).



G01818519

Fig. 5: Disconnecting The Shift Solenoid Harness Connector, A/T Clutch Pressure Control Solenoid Valve B Connector & Solenoid Valve C Connector

16. Remove the ATF cooler hoses (A) from the ATF cooler lines (B). Turn the ends of the ATF cooler hoses up to prevent ATF from flowing out, then plug the ATF cooler hoses and lines.



G01818520

Fig. 6: Removing The ATF Cooler Hoses From The ATF Cooler Lines

17. Check for any signs of leakage at the hose joints.
18. Remove the ATF cooler hose (A) from the hose clamp (B).